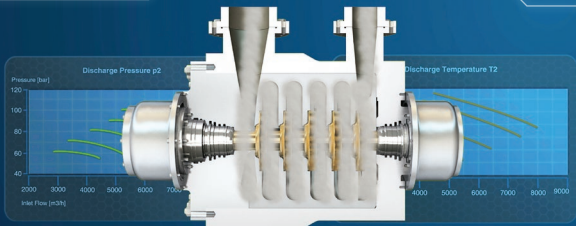


# SPS

Innovative antisurge system for centrifugal compressors  
Surge protection for variable gas and variable process conditions  
Advanced thermodynamic and compressor aeromechanical model  
Autodiagnostic based on performances and efficiency calculations

**SPS: the total antisurge protection**



 **IPC**

INDUSTRIAL PLANTS CONSULTANTS

[www.ipc-eng.com](http://www.ipc-eng.com)

Tel. 0039 080 5833101 · Fax 0039 080 5833059 · [info@ipc-eng.com](mailto:info@ipc-eng.com)